

THE MUSTANG ROUNDUP



News from Rogers Ranch School

September 2022

Message from Mrs. Hamburg

Welcome back to the 2022-2023 school year. Thank you for the collaboration and support in order to get this year off to a fantastic start. Rogers Ranch is an exceptional community! We are looking forward to many new initiatives that we have put into place in order to continue to provide our students with an exceptional educational experience. We are continuing to build on STEM program and this year our focus will be allowing our students to engage in intentional school STEM centered

clubs. One of the clubs that we will specifically be offering is Lego Robotics for grades 3rd-8th. We will provide more information soon. Another goal for the year is to build on Booster Club. We encourage families who are interested to join our monthly meetings. We value and partnership and collaboration with our families as we know it is a team working together in order to set our students up for success. We are looking forward to all the possibilities ahead!

Calendar

\$1 Dress Down Friday's

September 9, 16 and 30

School Picture Day

Tuesday, September 6

Early Release

Wednesday, September 14

Wednesday, September 28

Curriculum Night

Thursday, September 22

from 5-7pm

NJHS Induction

Tuesday, September 27

from 6-7:30pm

Booster Club Meeting

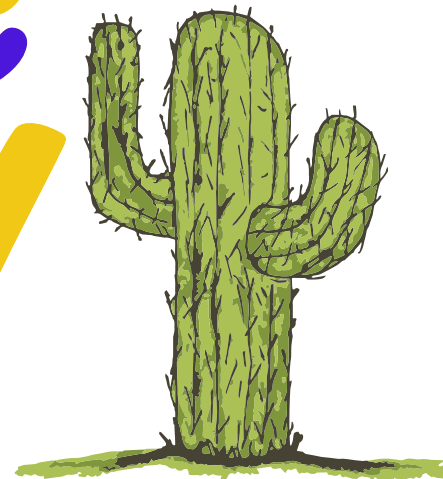
Thursday, September 29

from 5:30-6:30pm

at Rogers Ranch



Come
Join
us!



PBIS AT THE RANCH

**At Rogers Ranch our students are the Mustangs and they RIDE with P.R.I.D.E
When they are showing P.R.I.D.E they are being:**



**POSITIVE
RESPONSIBLE
INNOVATIVE
DEMONSTRATING EXCELLENCE**

Throughout the school year, students will learn and review the expectations and help lead others in modeling what it means to RIDE with P.R.I.D.E.

Posters are displayed at all locations on our campus in order to remind students of our expectations as they travel the school.

Students are rewarded with Class Dojo Points and Mustang Tickets when exhibiting these expectations.

Expectation Matrix

Location	Positive	Responsible	Innovative	Demonstrating Excellence
Classroom	<ul style="list-style-type: none"> Use kind words and actions towards others Listen to learn and wait your turn 	<ul style="list-style-type: none"> Be prepared and ready to learn Handle and use technology appropriately 	<ul style="list-style-type: none"> Work together to find solutions Use technology to enhance learning 	<ul style="list-style-type: none"> Follow all requests so you can do your best Set academic goals and work hard each day to achieve them
Hallways	<ul style="list-style-type: none"> Use kind words and actions towards others Model and remind others of appropriate behavior 	<ul style="list-style-type: none"> Walk in straight lines to the right Voice Level: 0 Use every step when going up and down the stairs Carry your pass 	<ul style="list-style-type: none"> Respect personal space Take most direct route to next class or destination Share the hallway space with others 	<ul style="list-style-type: none"> Keep hands and feet to yourself Pick up trash as you see it Follow adults' directions Walk
Cafeteria	<ul style="list-style-type: none"> Use kind words and actions towards others Remind others of appropriate behavior Say please and thank you 	<ul style="list-style-type: none"> Voice Level: 1-2 Get your utensils before you sit down Wash your hands 	<ul style="list-style-type: none"> Sit in your designated area Help pick up trash and clean your table Keep your hands and feet to yourself Bring your ID card and scan it carefully 	<ul style="list-style-type: none"> Keep lines straight Help a student who needs it Volunteer to help when needed Walk
Playground	<ul style="list-style-type: none"> Use kind words and actions towards others Remind others of appropriate behavior Keep hands and feet to yourself 	<ul style="list-style-type: none"> Use playground equipment appropriately Play safe fair Report any injuries to an adult Share and take turns 	<ul style="list-style-type: none"> Work together to find solutions Ask an adult for help when needed Make safe choices 	<ul style="list-style-type: none"> Help keep the playground clean Throw trash in the trash can Follow adults' directions
Restrooms	<ul style="list-style-type: none"> Respect others' privacy Remind others of appropriate behavior 	<ul style="list-style-type: none"> Voice Level: 0-1 Flush the toilet after use Wash your hands Keep water and soap in the sink 	<ul style="list-style-type: none"> Report any messes or problems to an adult 	<ul style="list-style-type: none"> Sign out before leaving the classroom, sign in when you return Follow adults' directions



STEM @ THE RANCH



Discovery Education in Action

This our K-8 teachers are using Discovery Education to provide intentional science, overall STEM, opportunities for our students.

Students are consistently engaging in hands on learning opportunities through the DE hands on investigations.

These are just a few of the representations of the implementation of STEM at Rogers Ranch.



Family/Community STEM Events

Mark your calendar for our STEM community events happening this year!

- November 10- Lego Theme
- February 2- STEM Career Day
- May 4- May the 4th Be With You- Centered on our community partnership with Vulcan Materials and presenting community project outcome.

STEM Vision Statement

We prepare students to excel in STEM fields of study and succeed in 21st century careers as leaders and innovators.



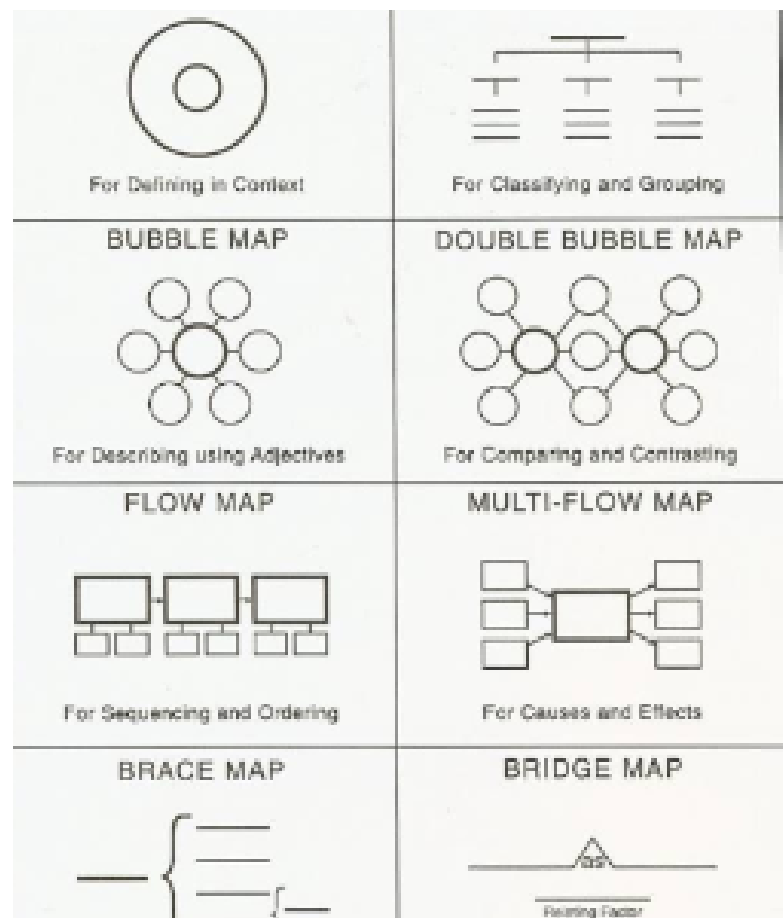
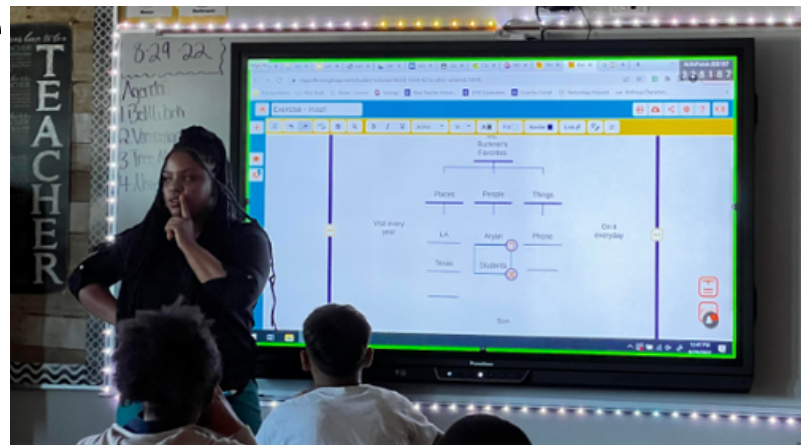
Thinking Maps at Rogers Ranch

I am excited to announce that we are becoming a Thinking Maps school!

Thinking Maps is a shared visual language for learning.

Visualizing our thinking allows us to have a concrete image of our abstract thoughts. Visual representations enhance the brain's natural ability to detect and construct meaningful patterns.

Thinking Maps reduce anxiety by providing familiar visual patterns for thinking and working with complex ideas and situations. Here are just a few of the examples of our Thinking Map journey so far this year!



Take a peak inside our classrooms

This year at Rogers Ranch we are placing an emphasis on building mathematical problem solvers and critical thinkers through our math instruction. Here are a few of the examples of the learning opportunities our students are being provided at The Ranch!

